



EAST POINT SCHOOL

MORROW- Preparing for the Future

CLASS XII Newsletter

AUGUST 2021



GLIMPSES

ACADEMIC STATION

ACCOUNTANCY
CALCULIA- Numbers
BIOLOGY
SOCIO – HISTORY CSP ACTIVITY
SOCIO – GEOGRAPHY
PSYCHOLOGY
SOCIO – POLITICAL SCIENCE
ECONOMICS
INFORMATICS PRACTICES
PAINTING

CO SCHOLASTIC ARENA

- Independence day activity.
- Pledge on Sadbhawna Diwas.
- Club Activity

TÊTE-À-TÊTE

- PARENTS
- TEACHERS
- SCHOLARS

WARM WISHES

- BIRTHDAY WISH

GOING THE EXTRA MILE

- WORKSHOPS / ENRICHMENT PROGRAMME FOR TEACHERS

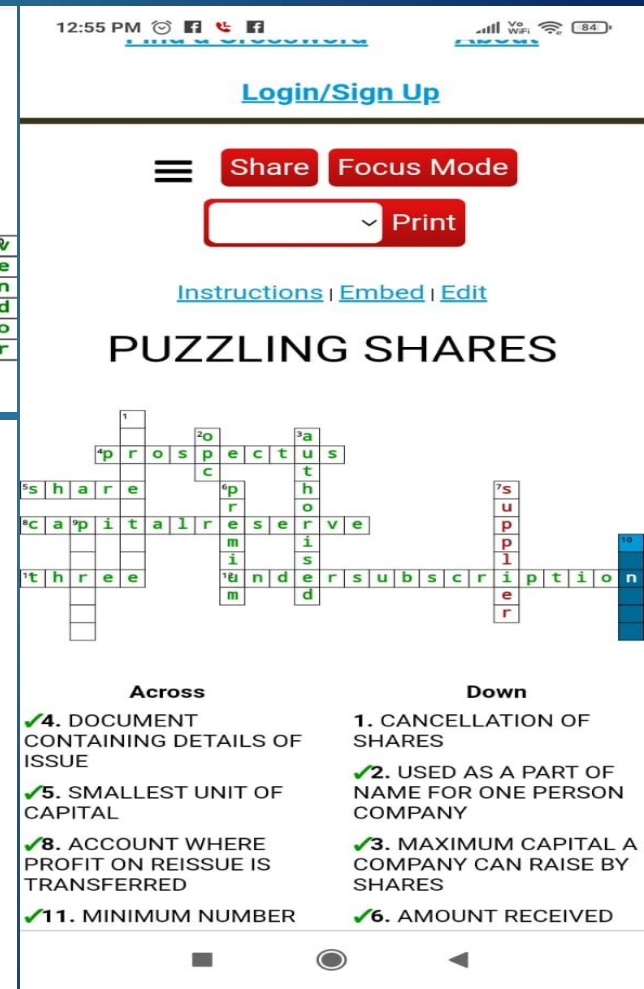
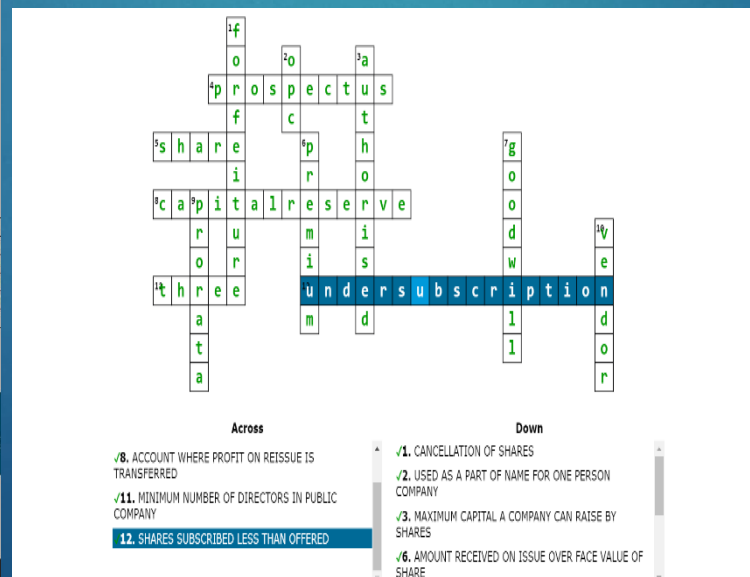
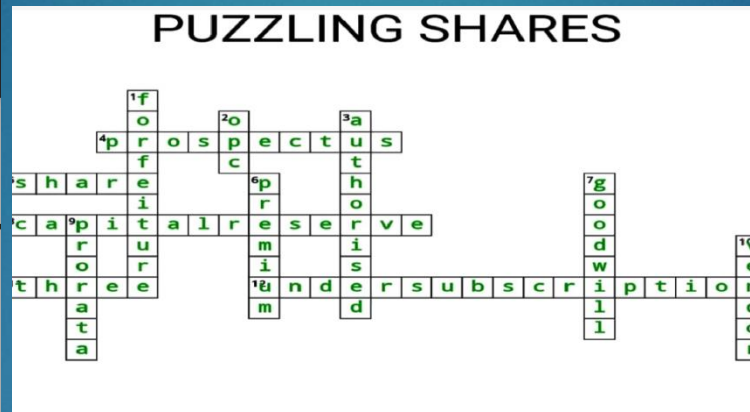
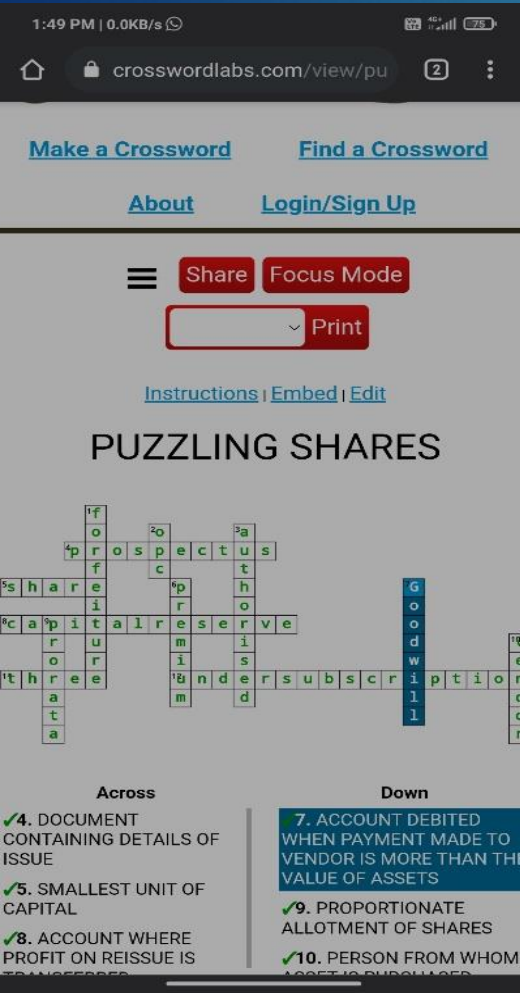


ACADEMIC STATION



ACCOUNTANCY

Students were shared a link of crossword puzzle online. They completed the puzzle and shared the pictures of their solved puzzles. Students enjoyed the activity used for revision.



CALCULIA

In this activity students need to verify that amongst all the rectangles of the same perimeter, the square has the maximum area.

Expt. No. _____

Page No. _____

ACTIVITY - 18

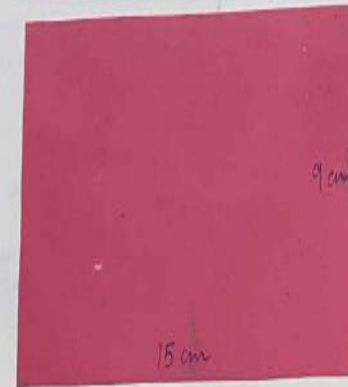
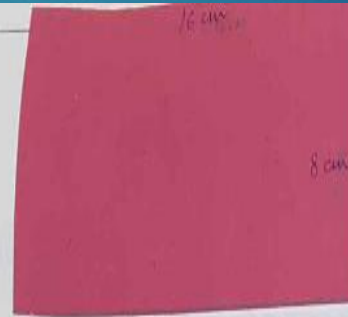
OBJECTIVE :

To verify that amongst all the rectangles of the same perimeter, the square has the maximum area.

MATERIAL REQUIRED : Chart paper, paper cutter, scale, pencil, eraser, cardboard, glue.

METHOD OF CONSTRUCTION :

- 1) Take a cardboard of a convenient size and paste a white paper on it.
- 2) Make rectangles each of perimeter say 48cm on a chart paper. Rectangles of different dimensions are as shown -



Expt. No. _____

Page No. _____

R₁ : 16 cm x 8 cm, R₂ : 15 cm x 9 cm
R₃ : 14 cm x 10 cm, R₄ : 13 cm x 11 cm
R₅ : 12 cm x 12 cm, R₆ : 11.5 cm x 11.5 cm
R₇ : 10.5 cm x 13.5 cm

3. Cut out these rectangles and paste them on the white paper on the cardboard (fig. vii)

4. Repeat step 2 for more rectangles of diff dimensions each having perimeter 48 cm

5. Paste these rectangles on cardboard

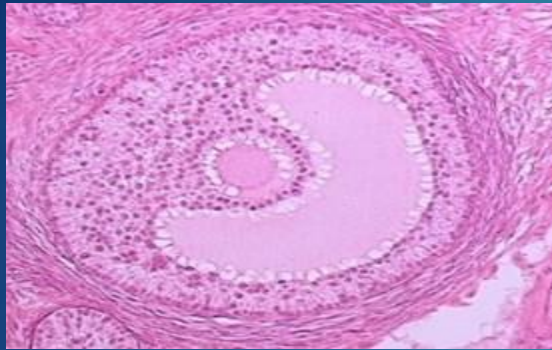
DEMONSTRATION :

1. Area of rectangle of R₁ = 16 cm x 8 cm = 128 cm²
Area of rectangle R₂ = 15 cm x 9 cm = 135 cm²
Area of R₃ = 140 cm²
Area of R₄ = 143 cm²
Area of R₅ = 144 cm²
Area of R₆ = 143.75 cm²
Area of R₇ = 141.75 cm²

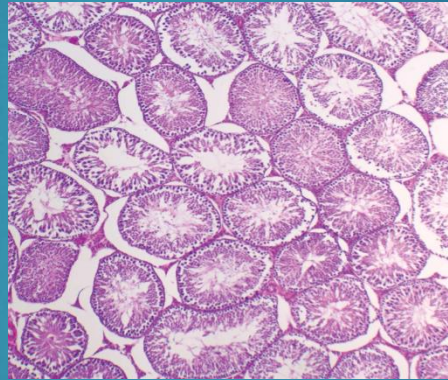
Perimeter of each rectangle is same but their area are different. Area of rectangle R₅ is the maximum. It is a square of side 12 cm. This can be verified using theoretical description.

BIOLOGY

Identification of stages of gamete development, i.e., T.S. of testis and T.S. of ovary through permanent slides. And study of T.S. of blastula through permanent slides (Mammalian).



T.S. of Ovary. (i) In the section of ovary, there is a mass of tissue lined with germinal epithelium. Inside that you will observe an ovum, which is a cell surrounded by one to several layers of follicular cells. As the ovum matures, the number of surrounding follicular cell layer increases



T.S. of testis - a large number of seminiferous tubules, various stages of gamete development from periphery towards lumen and identified the types of cells namely, Germinal epithelium, Spermatogonial cells, Primary spermatocytes, Secondary spermatocytes, Spermatids and Spermatozoa.



T.S. of Blastula- Blastula appears as a sphere with a cavity known as blastocoel. An outer layer of blastomeres known as trophoblasts is observed. One end of the blastula shows a cellular mass adhered to the trophoblast. This is known as the inner cell mass.

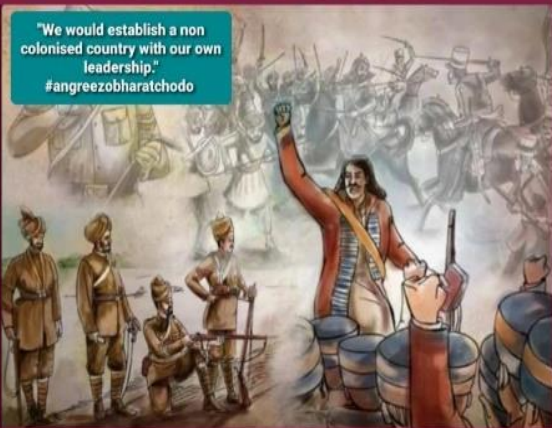
HISTORY



- ▶ Students elaborately discussed on the Revolt of 1857 – the first war of independence. Based on that discussion the students were asked to prepare a proclamation giving a call to their fellow countrymen to act against the oppressive rule of the Britishers.

HISTORY ACTIVITY

"We would establish a non colonised country with our own leadership."
#angreezobharatchodo



Ayush Mittal
XII - F



our time has come!!

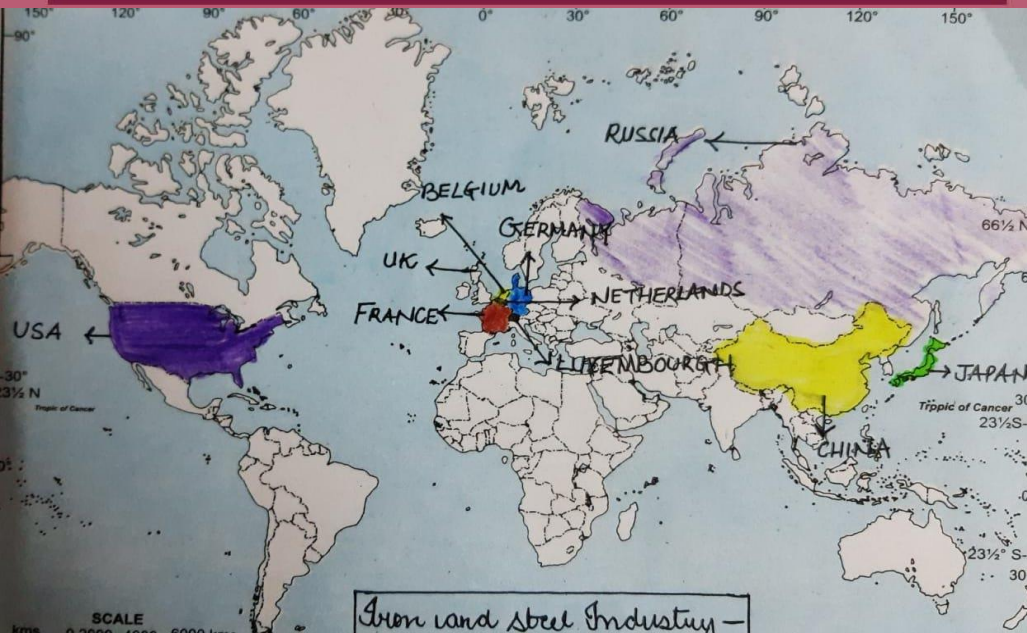
we must raise our voices against the oppressive rules being imposed by the british authorities.



MAP ACTIVITY

GEOGRAPHY

To improve the concept of location of the industrial region of India as well as world students were guided to practice in class.



PSYCHOLOGY

To improve the conceptual understanding of psychological concepts, students were guided to make a beautifully illustrated and colourful wall chart containing enticing images and informative content. It provides an excellent overview of the topic and covers areas such as stress, personality and psychological disorders etc.

Psychology

Made By Ananya Mishra 12-D Roll No-5

ASSESSMENT METHODS

FACT!! The assessment method is one of the most important methods of the study. It is also used in the form of a test to measure the level of knowledge in the hands of additional support.

It helps people empower and grow. They used to ask only common questions like what are your additional skills etc....

Psychology methods
It is an objective and standardized measure of an individual's mental or behavioural characteristics. It has been developed to measure all the attributes. Eg- guidance, training, placement etc....

Interview
It involves asking information from a person or at one to one basis. Eg- when a counsellor interacts with a client, when a journalist interviews important people for national importance.

Case Study
It is an in depth study of an individual in terms of his/her psychological and physical characteristics. They are based on different data generated by various methods...

Self Report
It is a method in which the person provides himself information about himself. Eg- personal diary, journal.

Observation
It involves employing systematic organized and objective procedure to record behavioural phenomena occurring naturally in real time. Eg- mother-child interactions.

STRESS

Stress is a silent killer and type of change that causes physical, emotional, or psychological strain. Stress is your body's response to anything that requires attention or action. Everyone experiences stress to some degree.

TYPES OF STRESS

3 Types of stress are there :-

- Physical and Environmental Stress
- Social Stress
- Psychological Stress Internal Sources of Stress

PERSONALITY

Personality is characterized by a set of relatively enduring and distinctive patterns of thought, feeling, and behaviour that are unique to each individual.

Personality refers to our characteristic ways of responding to individual and situations.

Key Characteristics of Personality

1. Consistent: Personality traits are consistent across different situations and over time.

2. Enduring: Personality traits are enduring and stable over a long period of time.

3. Distinctive: Personality traits are distinctive and unique to each individual.

4. Organized: Personality traits are organized and structured.

5. Dynamic: Personality traits are dynamic and changeable.

6. Subjective: Personality traits are subjective and can be measured in different ways.

7. Multifaceted: Personality traits are multifaceted and complex.

8. Influenced: Personality traits are influenced by various factors such as genetics, environment, and social interactions.

9. Stable: Personality traits are stable and do not change easily.

10. Unique: Personality traits are unique to each individual.

11. Predictable: Personality traits are predictable and can be used to predict behaviour.

12. Measurable: Personality traits are measurable and can be quantified.

13. Heritable: Personality traits are heritable and can be passed on from parents to offspring.

14. Cultural: Personality traits are influenced by culture and social norms.

15. Situational: Personality traits are situational and can change depending on the context.

16. Flexible: Personality traits are flexible and can adapt to different situations.

17. Resilient: Personality traits are resilient and can withstand stress and adversity.

18. Adaptive: Personality traits are adaptive and can help individuals cope with their environment.

19. Stable: Personality traits are stable and do not change easily.

20. Unique: Personality traits are unique to each individual.

ABNORMAL PSYCHOLOGY

Abnormal Psychology is the study of psychological disorders and the treatment of these disorders. It is a branch of psychology that focuses on the diagnosis, treatment, and prevention of mental health problems.

SCHIZOPHRENIA
A chronic mental disorder characterized by distorted thoughts, feelings, and perceptions. It is often accompanied by hallucinations and delusions.

DEPRESSION
A mood disorder characterized by persistent feelings of sadness and loss of interest in activities. It can affect anyone, regardless of age or background.

PHOBIAS
Intense, irrational fears of specific objects or situations. These fears are disproportionate to the actual danger and can significantly interfere with daily life.

OBSSIVE COMPULSIVE DISORDER
A mental disorder characterized by intrusive thoughts (obsessions) and repetitive behaviors (compulsions) that the individual feels compelled to perform.

HOW CAN WE DEFINE ABNORMALITY?
Abnormality can be defined in several ways: deviation from social norms, failure to meet societal expectations, and causing distress or impairment to the individual.

TYPE APPROACH

This approach attempts to comprehend and categorize people into groups by analyzing and based on their broad features in their behaviour.

All the people who belong to a group of people who have similarity of their behaviour characteristics that makes with the person that we describe.

The Four Temperaments

Scale: 1-100

1. Sanguine: High energy, optimistic, and sociable.

2. Choleric: High energy, assertive, and goal-oriented.

3. Melancholic: High energy, detail-oriented, and perfectionist.

4. Phlegmatic: Low energy, calm, and easy-going.

5. Sanguine: High energy, optimistic, and sociable.

6. Choleric: High energy, assertive, and goal-oriented.

7. Melancholic: High energy, detail-oriented, and perfectionist.

8. Phlegmatic: Low energy, calm, and easy-going.

9. Sanguine: High energy, optimistic, and sociable.

10. Choleric: High energy, assertive, and goal-oriented.

11. Melancholic: High energy, detail-oriented, and perfectionist.

12. Phlegmatic: Low energy, calm, and easy-going.

13. Sanguine: High energy, optimistic, and sociable.

14. Choleric: High energy, assertive, and goal-oriented.

15. Melancholic: High energy, detail-oriented, and perfectionist.

16. Phlegmatic: Low energy, calm, and easy-going.

17. Sanguine: High energy, optimistic, and sociable.

18. Choleric: High energy, assertive, and goal-oriented.

19. Melancholic: High energy, detail-oriented, and perfectionist.

20. Phlegmatic: Low energy, calm, and easy-going.

Based on fluid/humour

The Greek physician Hippocrates changed Greek medicine from being based on gods or humours (bile, phlegm, and blood) to being based on fluids (blood, yellow bile, black bile, and phlegm).

Tridosha

A Hindu medical system, changed Greek medicine into the language of earth, fire, and water. It is based on the three humours: earth, fire, and water. The three humours are called Tridosha. They are: earth, fire, and water.

Triguna

A Hindu medical system, changed Greek medicine into the language of earth, fire, and water. It is based on the three humours: earth, fire, and water. The three humours are called Triguna. They are: earth, fire, and water.

Body type and temperament

Body type and temperament are closely related. The body type of a person can influence their temperament, and vice versa. For example, a person with a lean body type might be more introverted, while a person with a muscular body type might be more extroverted.

SUBSTANCE RELATED AND ADDICTIVE DISORDER

Substance-related and addictive disorders are a group of mental health conditions characterized by compulsive use of substances, leading to significant impairment in social, occupational, and other areas of functioning.

ALCOHOL

Alcohol is a psychoactive substance that can lead to addiction. It is the most commonly used and abused substance in the world. Excessive alcohol consumption can lead to liver disease, heart disease, and other health problems.

COCAINE

Cocaine is a powerful stimulant that can lead to addiction. It is a highly addictive drug that can cause severe health problems, including heart disease, lung disease, and mental health issues.

HEROIN

Heroin is a powerful opioid that can lead to addiction. It is a highly addictive drug that can cause severe health problems, including respiratory failure, liver disease, and mental health issues.

ECONOMICS - XII

Students designed a digital poster of various Programmes launched by Indian Government in its Current Financial year Budget of 2021-22.

JAL JEEVAN MISSION

in 2020, drinking water is scarce and drinking water through tap is not available for 80% of the population in India.

all basic drinking water services available to all and all India water security, sanitation and hygiene (WASH) programme implemented by 2024.

JAL JEEVAN MISSION

14 May 2019

Jal Jeevan Mission

DRINKING WATER SECURITY AND HYGIENE (WASH) PROGRAMME

WASH programme aims to ensure that all people have access to safe drinking water and adequate sanitation and hygiene services.

ASSET MONETIZATION

- Sarita Gauri 2019

Asset monetization is the process of creating new sources of revenue for the government by enhancing the economic value of existing or underutilized public assets.

Asset monetization can be used to fund infrastructure projects, reduce government debt, and improve the efficiency of public services.

Asset monetization can be used to fund infrastructure projects, reduce government debt, and improve the efficiency of public services.

PM Aarogya Nibhar Swasth Bharat Yojana

- Harsh Sharma XII-A

In the Budget speech of FY 21-22, Prime Minister Narendra Modi launched 'Yojana' (PMASBP) scheme has been announced on 30 February, 2021, with an outlay of about Rs. 14,200 Cr over six years (2021-25). This will be in addition to the National Health Mission.

It is an Indian Health Sector

The PMASBP targets to build an IT-enabled disease surveillance system by developing a network of surveillance laboratories at block, district, regional and national levels in metropolitan areas & strengthening health units at the front of service, for effectively detecting, investigating, preventing and containing Public Health Emergencies and Outbreaks.

Supporting development of 17,700 rural and 1,000 urban health and wellness centers and setting up of integrated public health hubs in all districts and 1,100 block public health units in 11 states.

Funding: Centrally Sponsored Scheme with an outlay of about Rs. 14,200 crore over six years.

Operation Green Scheme

It is a price fixation scheme that aims to ensure farmers get the right price for the crops they produce. The scheme focuses on organized marketing of tomatoes, potatoes and onions. This scheme aims to Farmer Producers Organization, Agra Exporters, processing firms and professional management of agri-produce.

There is a need to link the consumption with products directly with a channel, instead of intermediaries. The government can also price support for these items, which are in demand and have a long shelf life.

Export entries, who comply with the above mentioned criteria may undertake the storage and shipment of notified crops.

MARKET PRICE SUPPORT FOR VEGETABLES

Year	Tomato	Potato	Onion
2018	10.4	10.8	11.0
2019	10.4	10.8	11.0
2020	10.4	10.8	11.0

Source: Government of India, Department of Agriculture, Cooperation and Farmers Welfare.

Pradhan Mantri Ujjwala Yojana

Pradhan Mantri Ujjwala Yojana was launched by Prime Minister of India Narendra Modi on 5 May 2015 to provide 50 million LPG connections to women of Below Poverty Line families. A budgetary allocation of 100 billion was made for the scheme in the first year of its launch. The connections distributed were 22 million against the target of 10 million.

In the Union Budget of 2021-2022, the government announced that 1 crore more connections will be provided under this scheme.

Pradhan Mantri Ujjwala Yojana

Pradhan Mantri Ujjwala Yojana was launched by Prime Minister of India Narendra Modi on 5 May 2015 to provide 50 million LPG connections to women of Below Poverty Line families. A budgetary allocation of 100 billion was made for the scheme in the first year of its launch. The connections distributed were 22 million against the target of 10 million.

In the Union Budget of 2021-2022, the government announced that 1 crore more connections will be provided under this scheme.

Pradhan Mantri Ujjwala Yojana

Pradhan Mantri Ujjwala Yojana (PMUY) was launched by PM Narendra Modi on 5 May 2015 to provide 50 million LPG connections to women of Below Poverty Line families. A budgetary allocation of 100 billion was made for the scheme.

Pradhan Mantri Ujjwala Yojana (PMUY) was launched by PM Narendra Modi on 5 May 2015 to provide 50 million LPG connections to women of Below Poverty Line families. A budgetary allocation of 100 billion was made for the scheme.

JAL JEEVAN MISSION

- khushi goyal 12-A

Pradhan Mantri Ujjwala Yojana (PMUY) was launched by PM Narendra Modi on 5 May 2015 to provide 50 million LPG connections to women of Below Poverty Line families. A budgetary allocation of 100 billion was made for the scheme.

Pradhan Mantri Ujjwala Yojana (PMUY) was launched by PM Narendra Modi on 5 May 2015 to provide 50 million LPG connections to women of Below Poverty Line families. A budgetary allocation of 100 billion was made for the scheme.

PAINTING ACTIVITY CLASS XII

The face is a mirror of the mind. Everything is revealed through a human face. In this activity, the students were asked to express their feelings through their portraits. This activity was an attempt to understand the self.



Hello I'm Abhigya.
I have short hair and big eyes. I have well defined lips and I've represented the same. I even have a well defined jawline. I mostly keep my hair open and that's what I've shown here.



I'm shrishri shrivastava



Hello everyone it's me
Akash
And I make my self in a art form
as you see my face there is 3 different
colors
Blue to indicate my abilities
*Yellow ochre indicates my humanity
*Fluro yellow indicates to show my
aggression
* and blue colour indicates my passivity



I'm Taniya sisodia.
Having long hair makes me feel like a queen. I love my eyes that's why I kept them behind the glass like a showcase.



Hello I am Urvi Jain this is my version of self portrait. I have Frizzy hair that's why I used crumpled newspapers to demonstrate the same my eyebrows, nose and are lips the more prominent features in my face.



Hello, this is Anjali.
I made my self portrait in a contemporary manner. I have shades of light brown in my hair that looks like highlights there. I added yellow as the base colour and I keep my hair in a bun most of the time. The other features are superficial.



CO-CURRICULAR ARENA



CYBER AWARENESS PROGRAM



CBSE launched E-raksha competition for spreading awareness for cyber safety and wellness .The entries were invited in form of Article/video/poster/blog on topic " My idea for safe & peaceful cyber space ". IT Secretary of EPS Jiya of class-XII participated by writing an article about cyber safety for women.

MY IDEA OF A SAFE AND PEACEFUL CYBER SPACE.

"Where there is peace, there's no war." We should not define peace just by the absence of conflict and war, as these elements may be visible in the physical world but not in the digital sphere. The Internet is still in the zone of a negative peace: Current operations are not very violent, but there is an imminent risk of an escalation.

We have a good chance to move towards a stable peace if we can increase collaboration and trust between the different actors. We should act on different levels to stabilize the cyber space and to reduce the likelihood and impact of hostile actions.

Apparently, I came across the most depressing quote on the internet today, by renowned personality Robert Muller, who said, "There are only two types of companies: those that have been hacked and those that will be." Greed has evolved from thefts by people wearing black masks to evils working behind a screen for the sole purpose of extorting ransom money. One single vulnerability is all an attacker needs.

This, surely is not how we would describe peace.

To achieve a stable peace, we must invest in defensive measures on all levels. While offensive capabilities may serve as a deterrence because the attacker fears retaliation, defensive measures reduce the likelihood and the impact of a successful attack. In the following, we highlight the two most important components of a stable cyber peace: security (including resilience) and trust.

What is Cyber safety? In short, cyber safety means being secure online. The online environment is rife with threats to our safety and security. Naturally, we wish to mitigate these threats where possible, not only as an organization but also in our individual capacities.

A major point to note; an ideal and an idea are two distinct things. The way Google defines something doesn't have to be my interpretation of the same. The world itself can be defined by the people and the stories they carry.

My idea of a safe and peaceful cyber space would be a place where teenage girls are free from predators, where greed doesn't control the human minds, where people are kind to strangers on the internet, where kids are not faced towards complete violence, where growth takes place, where all communities are accepted, where changes are made, where there is acceptance, and most of all where we "feel" safe. My idea isn't as technical as an actual cyber world, but it surely contains problems modified from the real world issues.

This 22nd day of August, lets tie the knot of trust and care, and promise to keep ourselves and our families safe from all and any cyber-threats. This year, celebrate the notion of E-raksha!

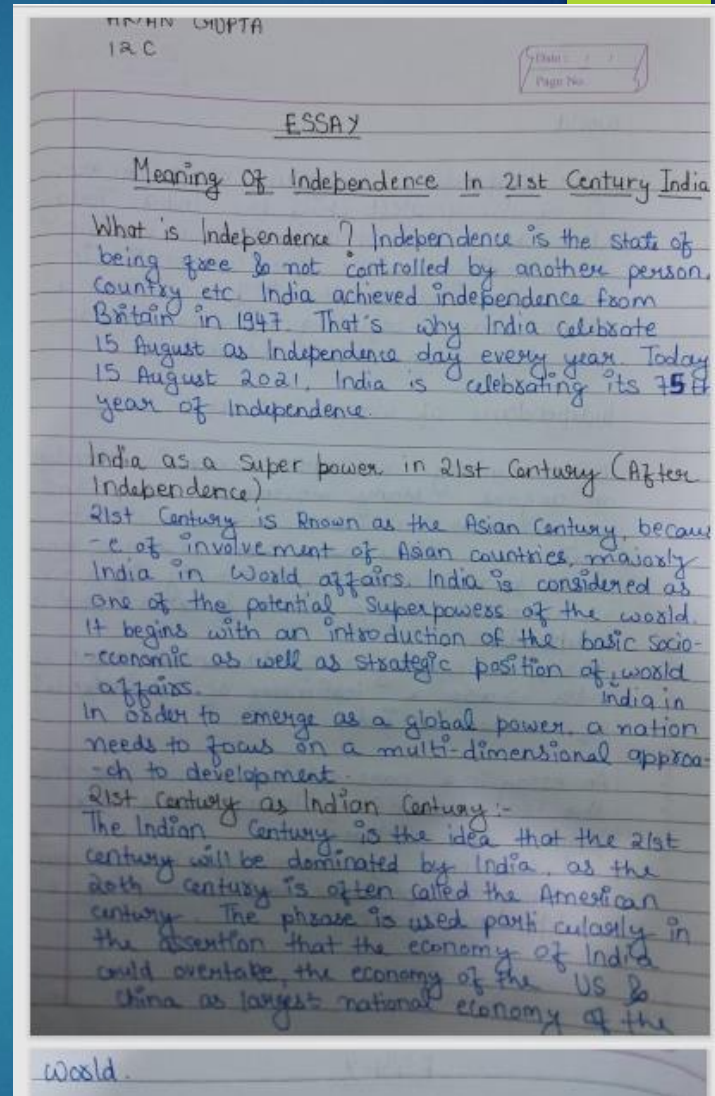
Independence day activity (essay)

Meaning of Independence In 21st Century

Earth is a vast planet full of various cultures. If an individual would like to learn and follow all the wide variety of cultures it will probably take a year or so. We have different religions which different people are devoted to which is actually great, as there is always a way with the faith. Faith gives people a destiny which each and every individual is conquering day by day. An individual gets his full independence when they ain't dependent on someone. In the 21st century people have got to be more independent than ever. People have right to education, right for their freedom, right to speak and many other rights, but there are still some places on earth where these basic rights don't exist which is still affecting a wide variety of people. There is still discrimination, casteism and violence on humans in developed as well as under developed areas. I want people to understand that from the joy of these cultures we can not close our eyes to the darkness of this world as millions and billions have faced or even facing right now through cruelty. We the citizens of India should always raise our voice on any type of brutality on us in any form. The government still needs to improve a lot in different sectors like safety, corruption, education, etc. Government should bring strict laws which can help our individual rights. These laws should be so strict that a person can not even think of committing any type of crime. If we as an individual prepare ourselves strong from mentality, physically, morally, socially then we will not have to face any

problem. For me the meaning of independence in the 21st century is that a wide range of independence is still required to become fully independent. But the independence of the 21st century is the most independent we ever got till now. The path of knowledge gives a path of thought and a path of thought gives independence from cruelty.

Rakshit Chaurasia
XII C



Aryan Gupta
XII C

Sadbhavna Divas Assembly

Students took a pledge on the day of Sadbhavna Divas



Essay on Jobless people due to Covid (CLUB ACTIVITY)

Students were supposed To write an essay on the people who have left their jobs due to Pandemic

Unemployment Due to Covid-19

Firstly, covid-19 is a virus that has globally spread across the world. Viruses are very small parasites, & are smaller than bacteria. To survive and reproduce they need a host.

Covid-19 has disrupted the whole world. There are people who lost their loved ones. Countries economies are crashing down and due to social distancing, many people such as construction workers have lost their jobs. For many people no jobs means no food, no security, no future. This type of unemployment has increased in many areas ~~such as~~ mostly big cities. As people in big cities such as Delhi and Mumbai come from their villages to search for job and they mostly do jobs such as construction workers, plumbers and many such jobs. Due to corona most of them have been laid off.

The economic and labour crisis created by the covid-19 pandemic could increase global unemployment by almost 25 million. However, if we see an internationally coordinated policy response as happened in the global financial

Topic: _____ Date: _____

crisis of 2008, the impact on global unemployment could be significantly lower. The ~~present~~ preliminary assessment note calls for urgent, large-scaled and coordinated measures across three pillars: protecting workers in the workplace, stimulating the economy and employment, and supporting jobs and incomes. Underemployment is expected to increase on a large scale, as the economic consequences of the virus outbreak translate into reduction in working hours and wages. In times of crisis like the current one, we have two key tools that can help mitigate the damage and restore public confidence. Firstly, social dialogue, engaging with workers and employers and their representatives, is vital for building public trust and support the measures that we need to overcome this crisis. Secondly, international labour standards provide a tried and trusted foundation of policy that focuses on recovery that is sustainable and equitable. Everything needs to be done to people at this difficult time.

Teacher's Sign
Teacher's Sign

Construction industry members – including owners, developers, contractors, subcontractors and supply chain vendors – have experienced varying degrees of impacts as a result of the COVID-19 pandemic. The nature of the impacts and extent of the ramifications are in large part dependent upon the location of both the respective businesses and underlying projects. Direct impacts have ranged from a slowdown of available goods and labor through to suspensions and, in some instances, terminations of parties or entire projects. Construction activities remain in flux in some states and cities depending upon whether construction is classified as an essential business.

As a result, the COVID-19 crisis has led to the need for industry members to address both short-term and long-term business

challenges, as well as formulating project-by-project solutions in the face of a new global and national environment. The full breadth and scope of the changes needed to address issues arising from the pandemic are still unknown, and this analysis is likely to continue to evolve until a vaccine or other curative measures are in place on a global basis.

These new realities touch almost every aspect of the construction process, and specifically such issues as: contract or project notices for default, scheduling and adjustments; project suspension, termination and reinstatement; Occupational Safety and Health Administration (OSHA) and workplace safety compliance; work force management; material, subcontractor and supply chain delays and impacts; risk management and insurance; claims avoidance or, alternatively, claims management; and the disputes process.

Prudent decision-making in this new and unknown environment suggests the use and consultation with persons and teams with necessary industry and legal experience. A proactive approach that seeks sound and practical legal advice will be essential to making cost-effective decisions as new impacts from the pandemic materialize with industry members.

Happy Birthday
August



AKSHAT KHURANA
Class – XII- B
13th August



Kajal
XII E – 7th August



BHUWAN DHARIWAL
XII E – 10th August



HANCEY DEDHA
Class – XII- B
1st August



Karuna
XII E – 4th August

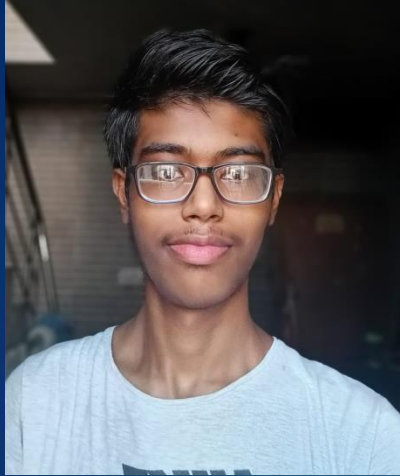
ANUNAY
MURALI
17TH
AUGUST

AMAN
KUMAR
10th
AUGUST

ASHIFA
19TH
AUGUST



Abhigya Singh
XII F – 23rd August



Deepak Kumar
14th August

VINEET SINGH

SUMIT KUMAR MEHTA

Hansraj
4th August

SOURAV
29TH
AUGUST

TUSHAR
RAGHAV
15TH
AUGUST

JOSEPH
MARTIN
13TH
AUGUST



Shreya Pal
21st August

Rakshit Chaurasia
4th August

WORKSHOPS

Focussing on
Competency Based
Education

By
Deepti Sharma
(03/08/2021)

Teaching strategies for students
with autism spectrum Disorders.
14/08/2021

- Assessment Reforms
 - Digital transformationUsing technology
- Need for SQAA
- Skilling in School
 - Innovative Pedagogy

Designing of Question Paper:

A workshop on designing Question Paper was conducted by the principal, Ms. Archana Srivastava wherein she guided the teachers about the kind of questions to be included like application-based, Multiple choice Index, Reasoning based and so on. The agenda was to make students equipped with all the concepts and in-depth knowledge of the subject. The workshop was very informative for the teachers as it included a variety of questions which are a must for the students to know and attempt.

Teachers' Address

Consistent ward enhancement through school is not effective without the commitment of all the stakeholders involved.

Teachers are probably the most important of these since, they are major change agents by virtue of their direct impact on students and thus each teacher must strive to keep students motivated to learn and unleash their inborn talent.

- Ms. ESHA SHARMA
PGT Economics

Parents' Address

East Point school has enriched my ward with optimum learning environment as well as yielded them with diverse elements of development and growth.

FATHER OF SHWETA CLASS –
XII A)

Scholar's Address

I, as the student of this school, have encountered various substantial opportunities that subsequently aided me with giving an accurate direction and guidance to my cognizance and accomplishments.

-SHWETA
(CLASS XII A)

We are what we
repeatedly do,
excellence, therefore,
is not an act but a habit.

Aristotle